



# Quik-Spec™ Family

Specification has never been easier or faster for the distribution products you need to achieve selective coordination, and improve electrical system safety and performance

## Cooper Bussmann: Leading the Industry in Downtime Reduction, Workplace Safety & Code Compliance Solutions

### Customer Assistance

#### Customer Satisfaction Team

The Cooper Bussmann® Customer Satisfaction Team is available to answer questions regarding Cooper Bussmann products and services. Calls should be made Monday – Friday, 8:00 a.m. – 4:30 p.m. for all US time zones.

The Customer Satisfaction Team can be reached via:

- Phone: 636-527-3877
- Toll-free fax: 800-544-2570
- E-mail: [busscustsat@cooperindustries.com](mailto:busscustsat@cooperindustries.com)

#### Emergency and After-Hours Orders

To accommodate time-critical needs, Cooper Bussmann offers emergency and after-hours service for next flight out or will call. Customers pay only standard price for the circuit protection device, rush freight charges and a modest emergency fee for this service. Emergency and after-hours orders should be placed through the Customer Satisfaction Team. Call:

- Monday – Friday, 8:00 a.m. – 4:30 p.m.  
Central Time 636-527-3877
- After hours 314-995-1342

#### C3 – The Enhanced, Online Cooper Customer Center

Providing real time product availability, net pricing, order status and shipment tracking across six Cooper divisions: B-Line, Bussmann, Crouse-Hinds, Lighting, Power Systems & Wiring Devices. Available at:

- [www.cooperc3.com](http://www.cooperc3.com)
- 877-995-5955 for log-in assistance.

### Application Engineering

Application Engineering assistance is available to all customers. The Application Engineering team is staffed by degreed electrical engineers and available by phone with technical and application support Monday – Friday, 8:00 a.m. – 5:00 p.m. Central Time.

Application Engineering can be reached via:

- Phone: 636-527-1270
- Fax: 636-527-1607
- E-mail: [fusetech@cooperindustries.com](mailto:fusetech@cooperindustries.com)

### Services

- Engineering: electrical system review, arc-flash hazards, selective coordination, labeling requirements
- Training: electrical safety and safety programs, code compliance
- Testing: component testing for agency certifications

Contact us for more information on services:

- Phone: 636-207-3294
- E-mail: [services@cooperindustries.com](mailto:services@cooperindustries.com)

### Online Resources

Visit [www.cooperbussmann.com](http://www.cooperbussmann.com) for the following resources:

- Product cross reference
- Arc-flash calculator
- OSCAR™ 2.0 compliance software
- Training modules
- Selective coordination application materials

The Quik-Spec™ family of products provide fusible solutions that make it simple and cost effective to selectively coordinate a fused electrical distribution system.

They also help designers, installers and building owners achieve greater downtime reduction, Code compliance and workplace safety by providing high interrupting ratings, high short-circuit current ratings, component protection and low arc-flash hazards.

Selective coordination is mandatory per the NEC® for the circuit paths of some vital loads on specific systems including:

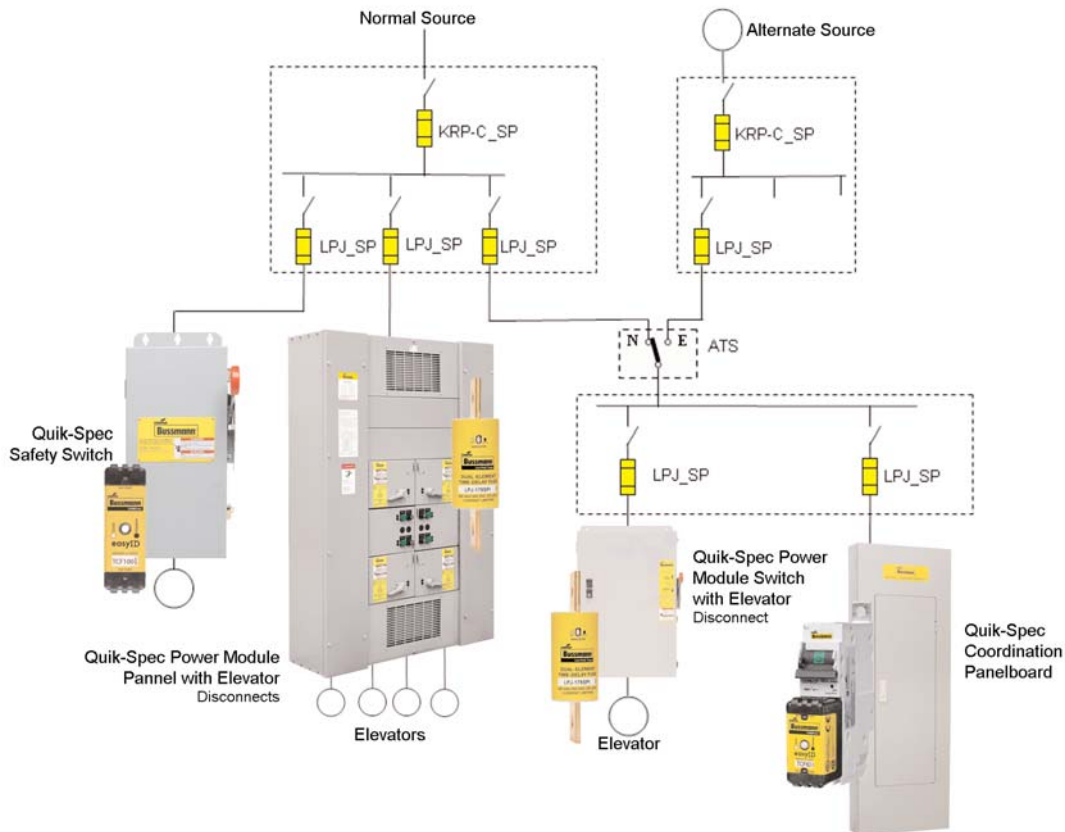
- Elevator Circuits: 620.62
- Emergency Systems: 700.27
- Legally Required Standby Systems: 701.18
- Critical Operations Power Systems: 708.54
- Essential Electrical Systems: 517.26

An electrical system circuit that has selectively coordinated overcurrent protective devices allows only the nearest upstream overcurrent protective device to open under any overcurrent condition. This increases the system's reliability by preventing an overcurrent event from

cascading and unnecessarily opening multiple levels of upstream overcurrent protective devices with the potential to unnecessarily blackout an entire building.

For other electrical systems, selective coordination is also a highly desirable design consideration as selectively coordinated overcurrent protective devices help avoid unnecessary blackouts that negatively affect business assets and productivity.

Cooper Bussmann® Low-Peak® fuses make achieving a selectively coordinated system easy. For available short-circuit currents up to 200kA, just maintain at least a minimum 2:1 amp rating ratio between upstream and downstream fuses (see below). For almost all systems, the engineer and installer can save money and time since there is no need to do a short-circuit current study or plot time-current curves to engineer selective coordination. Low-Peak fuses also offer the benefit of interrupting ratings up to a 300kA. Very few electrical systems will have available fault currents greater than 300kA, and if the system changes and the available short-circuit current increases (less than 200kA), the Low-Peak fusible solution still provides selective coordination.



## Selective Coordination\* is Easy with the Cooper Bussmann® Low-Peak® Fuses

### 2:1 Amp Ratio

- Just keep a 2:1 upstream to downstream amp rating ratio between any Low-Peak fuse and you have selective coordination of the fuses in a circuit

### Wide Class and Rating Selections

- Low-Peak fuses are available in TCF CUBEFuse\*\* (Class CF, 1-100A), LP-CC (Class CC, 1-30A), LPJ\_SP (Class J, 1-600A), KRP-C\_SP (Class L, 601-6000A) and LPN-RK\_SP (250V Class RK1, 1/10-600A) & LPS-RK\_SP (Class RK1, 1/10-600A) with ratings up to 600Vac and interrupting ratings of 300kA (200kA for Class CC)

\* For other fuse types, see published ratios in the Cooper Bussmann publication "Selecting Protective Devices" (SPD). Go to [www.cooperbussmann.com/spd](http://www.cooperbussmann.com/spd).

\*\*Class J performance.

## The New Standard in Fusible Panelboards

### The Quik-Spec™ Coordination Panelboard (QSCP) Simplifies Selective Coordination and Offers More Application Flexibility.

Flexible Configurations –Up to 600Vac/400 Amp/200kA SCCR, or 125Vdc/400 Amp/100kA SCCR\*

- Now up to 400A main ratings, ideal for power distribution applications.
- 125Vdc rating ideal for utility applications.
- 1 to 100A fuse ratings in branch circuits to closely match loads - ideal for petro-chem control circuits or Uninterruptible Power Supply (UPS) circuits.
- Up to 200A fused loadside disconnect available.

### Same Size Footprint as Traditional Circuit Breaker Panelboards

- 20" W x 5 fl" D x various heights (depending on configuration).

### Easily Address NEC® Selective Coordination Requirements

- Eliminate plotting time-current curves and conducting expensive studies by simply following the published fuse selective coordination ratios for a fully fused distribution system.
- cULus Listed, the QSCP makes it easy to provide systems that comply with NEC® Selective Coordination Requirements\*\* for Emergency, Legally Required Standby, Healthcare Essential Electrical and Critical Operation Power Systems (COPS) per 700.27, 701.18, 517.26 and 708.54.

### Increase Safety

- Finger-safe Low-Peak® CUBEFuse® with high interrupting rating is used in the UL 98 Listed Compact Circuit Protector Base (CCPB).
- CCPB features a fuse interlock to prevent removing fuse while energized, fuse ampacity rejection to help prevent overfusing, and open fuse indication to speed troubleshooting.
- Lockout/Tagout provision eases OSHA compliance.
- Lock-On provision helps meet requirements for emergency circuits.
- Up to 200kA assembly SCCR ratings easily exceed most available fault current levels to help assure compliance with NEC® 110.9 and 110.10.
- Current-limitation of a fused solution reduces arc-flash hazards and minimizes damage to equipment and circuits.

### Save Time

- Specify for enclosures to ship within one week of order to start installation fast.
- Spare fuse compartment keeps replacements right at hand.
- Change fuses without removing panel covers.

For details, see Data Sheet 1160 online at [www.cooperbussmann.com](http://www.cooperbussmann.com)

\* 125Vdc rating applicable only to 40 amp or less CCPBs on MLO panels only.

\*\* When used in a fully fused distribution system.

**Now - Up To  
400A Mains!**



EC&M  
**Product  
OF THE  
Year  
09**  
Category Winner



## Take Workplace Safety to the Next Level

### Cooper Bussmann® Quik-Spec™ Safety Switch™ Provides Extra Measure of Protection

#### Meets UL and NEC® Requirements

- 200kA SCCR and 300kA IR ratings make it easier to comply with NEC® 110.9 and 110.10 requirements
- Listed to UL98 and UL50 standards

#### Enhanced Finger-Safe Design

- Large lineside shield is standard in all models
- Helps eliminate accidental contact with live parts

#### Current-Limiting Fuses Reduce Arc-Flash Hazard

- Class J performance Low-Peak® CUBEFuse® offers industry best arc-flash protection versus traditional models
- Type 2 "No Damage" motor starter protection when properly sized

#### Easy Interface with Viewing Window Option

- Window provides visual verification that switch contacts have operated
- View open fuse indication without opening the switch door

#### Flexibility of Application

- The 600V heavy-duty safety switch is available up to 100A with NEMA 1, 3R, 12 and 4X enclosures

#### Up to 100 Amps

- Configurable with fuse ratings from 1 to 100 amps to meet specific load protection requirements
- Can be used with the Quik-Spec™ Coordination Panelboard for circuits over 60 amps using panelboard feed-through lug option

For details, see Data Sheet 1156 online at [www.cooperbussmann.com](http://www.cooperbussmann.com)



## The Finger-Safe Cooper Bussmann® Low-Peak® CUBEFuse®

### Class CF CUBEFuse Offers Safety & Convenience In a Small Footprint

- Finger-safe IEC 60529 to help meet safe work practices per NFPA 70E
- Smallest footprint of any class fuse on the market
- Meets Class CF and Class J time-delay electrical performance for UL/CSA - 600Vac and 300kA IR AC
- Offers Type 2 (IEC 947-4-1) "No Damage" motor starter protection when sized properly
- Versatile - ratings from 1 to 100A
- Optional easyID™ open fuse indication speeds troubleshooting

For details, see Data Sheet 9000 online at [www.cooperbussmann.com](http://www.cooperbussmann.com)



#### CUBEFuse® Compact Circuit Protector Base (CCPB):

- Ampacity-rejection feature helps prevent overfusing - breaks at 15A, 20A, 30A, 40A, 50A, 60A, 70A, 90A and 100A
- Interlock feature prevents fuse removal while energized
- Local open fuse indication on CCPB base and optional indicating fuse speeds troubleshooting



#### CUBEFuse® fuse holders for the Quik-Spec™ Safety Switch:

- Provide ampacity breaks at 30A, 60A and 100A
- Helps prevent overfusing
- Holders accept CUBEFuse ampacities equal to or less than rating



## It's Easy to Meet Elevator Disconnect Requirements

### The Cooper Bussmann® Quik-Spec™ Power Module™ Switches and Panels Offer the Superior All-In-One Solution

#### Easy-to-Specify

- No need to worry if you're meeting Code requirements:
  - NEC® Selective Coordination
  - NFPA 72 Fire Safety Interface & component Monitoring
  - ANSI/ASME A17.1 (Shunt-Trip)
- The Cooper Bussmann® Quik-Spec™ Power Module™ Switch build-a-code assures you get all the right components, with the right ratings, properly assembled

#### Easy-to-Install

- The Quik-Spec Power Module Switch comes completely assembled, ready for installation
- Reduces the labor and time needed to assemble individual components

#### Provides Easy Selective Coordination

- Utilizes Cooper Bussmann® Low-Peak® LPJ\_SP Class J fuses
- Easy to coordinate with any upstream Low-Peak fuse by simply using a minimum 2:1 upstream to downstream fuse ratio

#### UL 98 Listed

- The Quik-Spec Power Module Switch meets prevailing ANSI/ASME, NEC® and NFPA 72 requirements for elevator disconnects
- UL 98 Listed (enclosed switch) and UL50 Listed (enclosure)

#### Quik-Spec™ Power Module™ Panel for Multi-Elevator Applications

- Features multiple switches in a single panel
- Offers significant space savings
- Like the switch, the Power Module Panel is easy to specify and factory configured
- Meets prevailing ANSI/ASME, NEC® and NFPA 72 requirements and is UL 67 Listed
- To order, just call your Cooper Bussmann representative with all relevant electrical and circuit information, and we do the rest

For details, see Data Sheet 1145 (PS - switch) and Data Sheet 1146 (PMP - panel) online at [www.cooperbussmann.com](http://www.cooperbussmann.com)

**Now with Quik-Ship Service!**



See below for details

The Quik-Spec™ Power Module™ Switch (PS) for single elevator applications.



Quik-Spec™ Power Module™ Panel (PMP) for multiple elevator applications.

### Quik-Ship Program: PS\_ 3 Days, PMP\_ 10 Days!

Ship-direct service within three business days for Power Module Switches (PS\_) and 10 business days for Power Module Panels (PMP\_).

\* Three day PS\_ shipment requires ordering from catalog numbers shown.

\*\* 10 Day PMP\_ shipment covers NEMA 1 enclosures with the ampacities shown and all requirements for relay type (AC or DC), accessory options and number of switches. To order PMP\_, contact your Cooper Bussmann representative with all relevant electrical and circuit information, we do the rest.

Power Module Switch*			Power Module Panel**	
Cat Numbers	Amps	Volts	Cat. Numbers	Amps
PS6T48R1KGBF3-X	60A	480V	PMP-400-X	400A
PS1T48R1KGBF3-X	100A	480V	PMP-600-X	600A
PS1T20R1KGBF3-X	100A	208V	PMP-800-X	800A
PS2T48R1KGBF3-X	200A	480V		
PS2T20R1KGBF3-X	200A	208V		